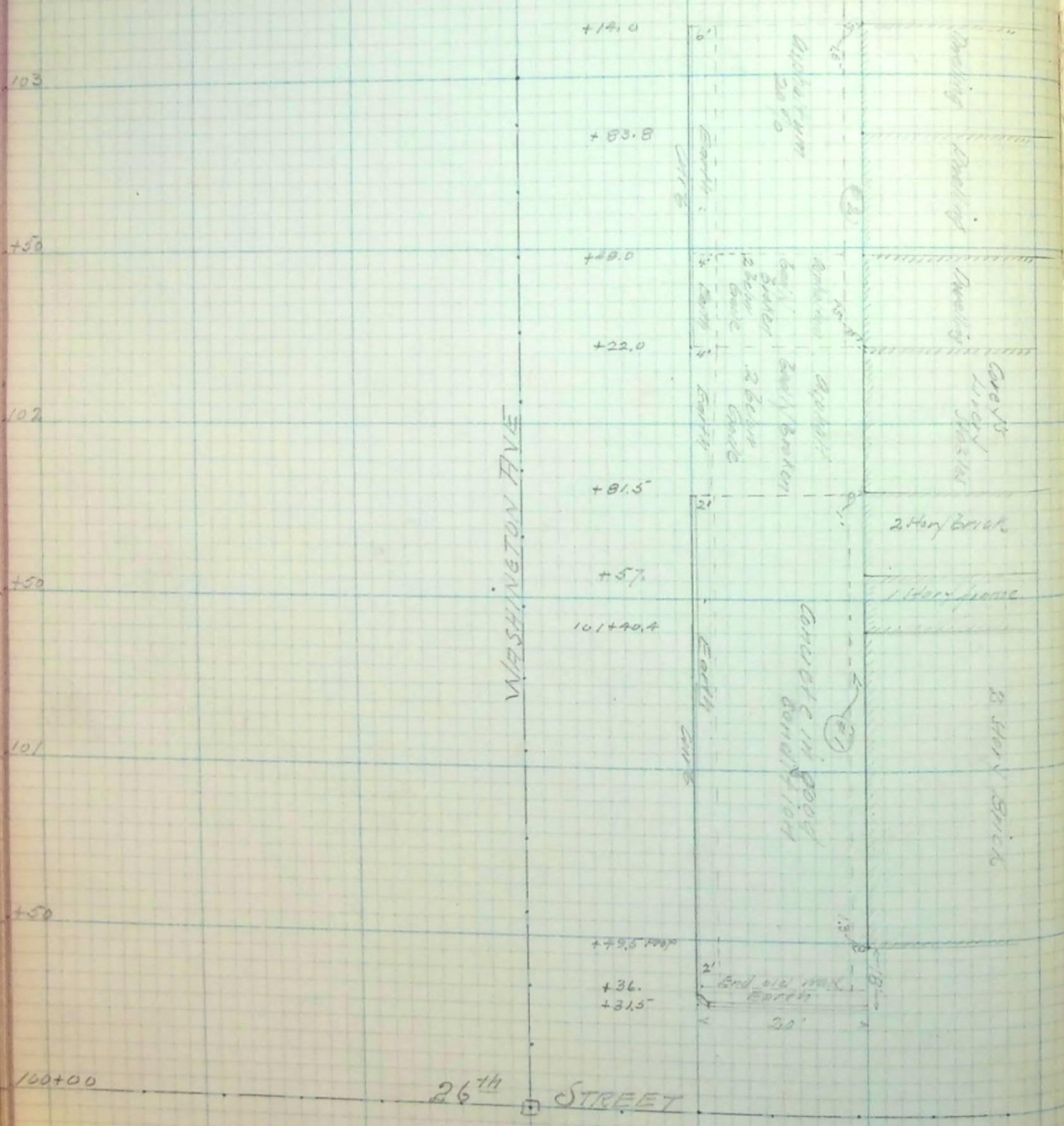


EAST SIDE WASHINGTON AVE

#1 = 100+36.0 S. end of strip unpaved next to buildings 13 wide from Sta 100+36. to 101+81.5  
 #2 = 102+22.0 S. end of strip unpaved next to prop line 15 wide Sta 102+22 to Sta 103+44.0



103  
 +50  
 102  
 +50  
 101  
 +50  
 100+00

WASHINGTON AVE

26<sup>th</sup> STREET

